

PLAYER OUTSIDE PLANE-OF-TOUCH
BALL INSIDE LINE-OF-TOUCH



Red player kicks the ball downfield. An opponent standing in-touch with both feet on the ground, slaps the ball, which is still in flight, back in field before it has crossed the touch-line.

(a) Is the ball in-touch?

No

PLAYER IN FIELD-OF-PLAY
BALL OUTSIDE LINE-OF-TOUCH.



Blue player is running with the ball just inside the touchline. A red opponent pushes the blue ball carrier towards the touchline. The blue player leaps into the air and crosses the touchline, but before he touches the ground, he is able to throw the ball back into the field-of-play.

(a) Is the ball in-touch?

No

PLAYER OUTSIDE PLANE-OF-TOUCH TOUCH BALL INSIDE LINE-OF-TOUCH



Red player kicks the ball from his own 10m line. It bounces downfield, where a blue player, with one foot in the field-of-play and one foot in-touch, catches the ball which has not crossed the touch-line.

- (a) Is the ball in touch? Yes
- (b) Who has put the ball into touch? Red player
- (c) Where is the mark for the lineout? Where the ball was caught
- (d) What team throws the ball in? Blue

Note: The only difference between a ball being caught directly, or on the bounce is to determine the place for the lineout. In both situations, it is immaterial whether the ball has or was going to cross the touch-line.

PLAYER IN FIELD-OF-PLAY BALL OUTSIDE LINE-OF-TOUCH



Red player punts the ball from outside his own 22m area and the ball crosses the plane-of-touch on the full. An opponent standing in the field-of-play, leaps in the air and before he crosses the touchline, slaps the ball back into the field-of-play. He then lands beyond the touchline.

- (a) Is the ball in touch? No

Note: The determining factor in whether the ball is in touch is not whether that player was in the air or where he lands. It is simply whether the body was beyond the touchline when contact with the ball was made.

TOUCH-IN-GOAL LINE

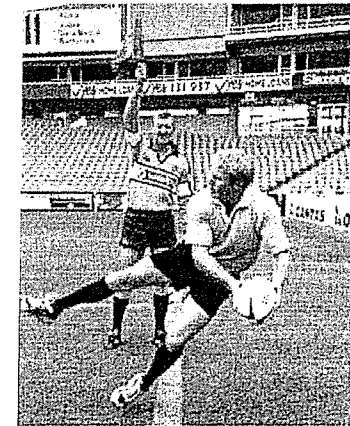


In general play, a red player on the 10m line, kicks the ball into the opponents' in-goal area, where it stops just short of the touch-in-goal line. A defending player, standing with one foot in touch-in-goal, picks up the ball.

Decision: 22 metre drop-out.

Note: Defending player did not place the ball in the in-goal, therefore has the option of making it dead.

PLAYER AND BALL OUTSIDE THE PLANE-OF-TOUCH



Red player kicks the ball for touch from a penalty. Blue player, standing in the field-of-play, dives across the touch-line and while in the air beyond the plane of touch, momentarily catches the ball and passes it back into the field-of-play.

- (a) Is the ball in touch? Yes
- (b) Where is the lineout? Where the ball crossed the plane of touch.
- (c) What team throws in the ball? Red

GOAL LINE



Red player kicks the ball from the field-of-play towards his opponents' goal-line. It rolls within 1 metre of his opponents' goal line, and stops. A blue player with one foot in the field-of-play and one foot in in-goal, reaches out, picks the ball up and touches it down behind the goal-line.

Decision: 5 Metre Scrum

Note: The blue player has taken (carried) the ball back into in-goal

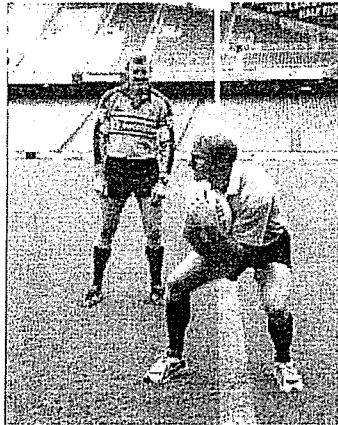
PLAYER AND BALL OUTSIDE THE PLANE-OF-TOUCH



Red player kicks the ball downfield. A blue opponent standing in touch with both feet on the ground, slaps the ball, which is still in flight back in-field, after it has crossed the plane-of-touch.

- (a) Is the ball in touch? Yes
- (b) Where is the lineout? Where the ball crossed the touchline
- (c) What team throws in the ball? Blue

GOAL LINE



Red player kicks the ball from the field-of-play, towards his opponents' goal-line. Blue player, with one foot in the field-of-play and one foot in the in-goal, catches the ball on the full and touches down.

Decision: 22 metre drop-out.

Note: Player with one foot in in-goal is deemed to be in-goal.